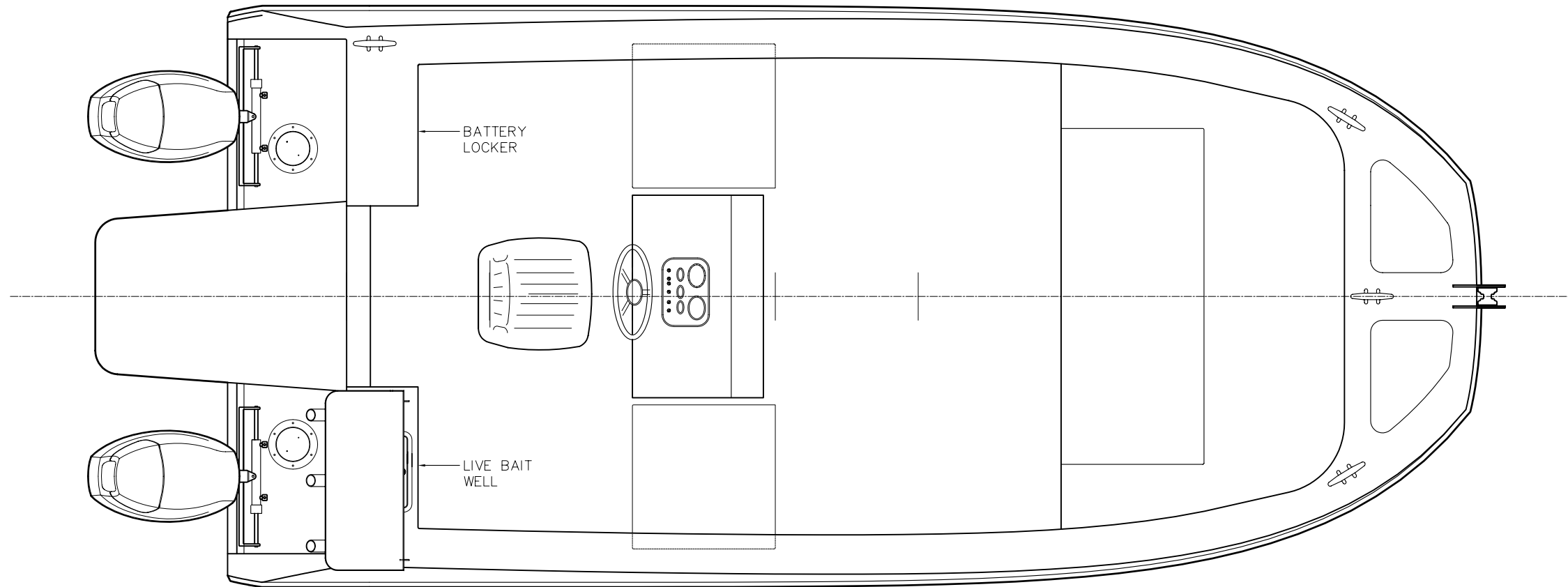
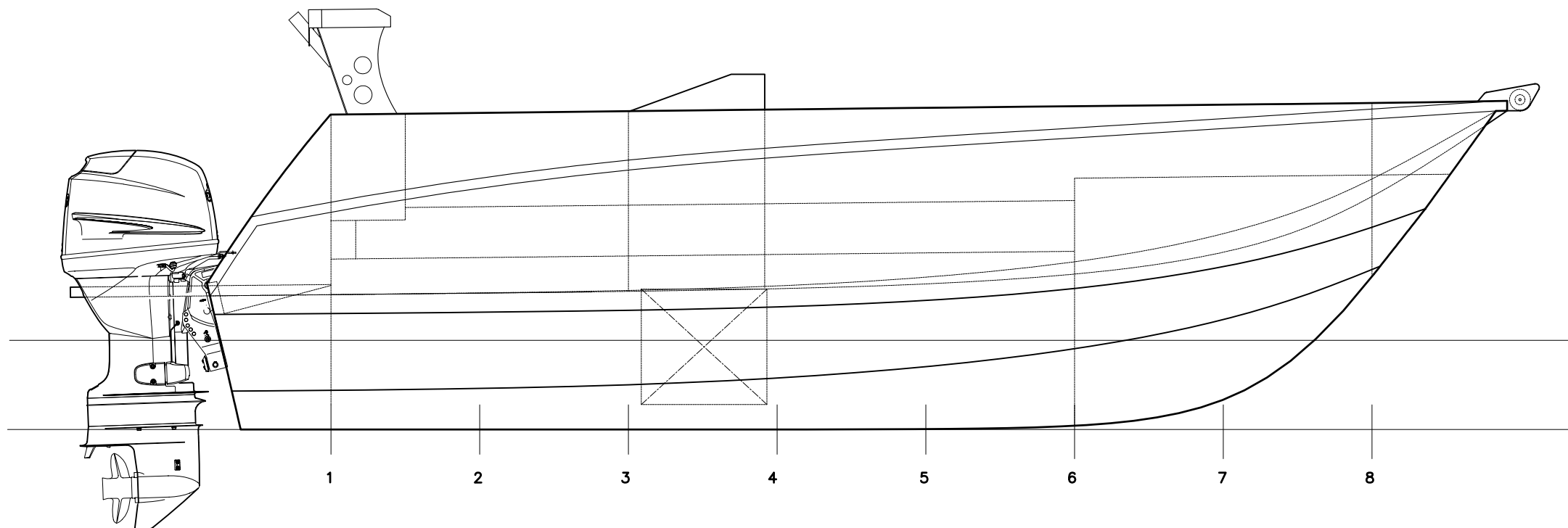


PRINCIPAL PARTICULARS

LOH: 5.2m (Hull Only)
BEAM: 2.40m (PLUS BELTINGS)
DEPTH: 0.71m
DRAFT: 0.36m (HULL)
D/RISE: 14° @ TRAN.
DISPL: 1050kg (DRY WITH OUTBOARDS)
ENG: 2x60HP RECOMMENDED
2x90HP MAX

5.2m POWER CAT
GENERAL ARRANGEMENT



www.ctmd.com.au

